

A decorative border surrounds the central text area, featuring a dashed blue line. School supplies are illustrated at the corners: a purple and teal pen in the top right, a green ruler and a grey set square in the bottom left, and a yellow pencil with a red eraser next to a blue notepad in the bottom right.

# 第三课时    Section B(1a—1d)



## 一、单项选择。

( ) 1. (张掖中学单元卷)—\_\_\_\_\_ size would you like?

—Large.

A. Why

B. When

C. What

D. How

( ) 2. —Would you like some \_\_\_\_\_?

—Yes, some chicken, please.

A. meat

B. drinks

C. vegetables

D. fruit

( ) 3. I don't like chicken, mutton \_\_\_\_\_ pork.

A. and

B. but

C. or

D. so

( ) 4. Would you like \_\_\_\_\_ orange juice, girls?

A. some

B. any

C. little

D. a

( ) 5. How much \_\_\_\_\_ do you want?

A. tomato

B. beef

C. egg

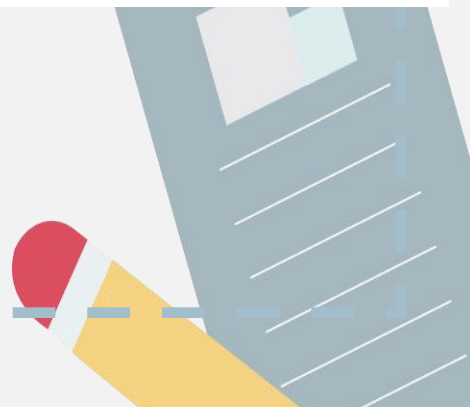
D. strawberry





## 二、根据句意及汉语或音标提示完成单词。

1. My grandmother likes to eat \_\_\_\_\_ (粥) every morning.
2. There are two \_\_\_\_\_ (洋葱) on the table.
3. We have all kinds of \_\_\_\_\_ /'dʌmplɪŋ/ in our restaurant.
4. You can have any kind of \_\_\_\_\_ (烙饼) here.
5. Linda has some rice and \_\_\_\_\_ /fɪʃ/ for lunch.






### 三、用方框中所给词的适当形式填空。

*be, tea, potato, order, chicken*

1. He would like \_\_\_\_\_ a small bowl of noodles.
2. There \_\_\_\_\_ some eggs in the bag.
3. Let's make \_\_\_\_\_ salad.
4. —Would you like green \_\_\_\_\_?  
—Yes, please.
5. Here is some \_\_\_\_\_ for you.





#### 四、单句改错。

- (     ) 1. What kind of noodles would she likes?  
          A              B          C                                  D
- (     ) 2. I don't like porridge and dumplings.  
                  A              B          C                  D
- (     ) 3. Black tea are a kind of healthy drink.  
          A              B          C                  D
- (     ) 4. My sister has many milk every day.  
                  A              B          C                  D
- (     ) 5. Would you like having some rice?  
                  A              B          C                  D
- 